

# Alameda North Housing

Block A Senior Phase

2000 Lakehurst Circle

Alameda, CA

Door Access / CCTV Submittal



## AECO SYSTEMS

3512 BREAKWATER CT.

HAYWARD, CA

(510) 342-0008 FAX (510) 342-0013

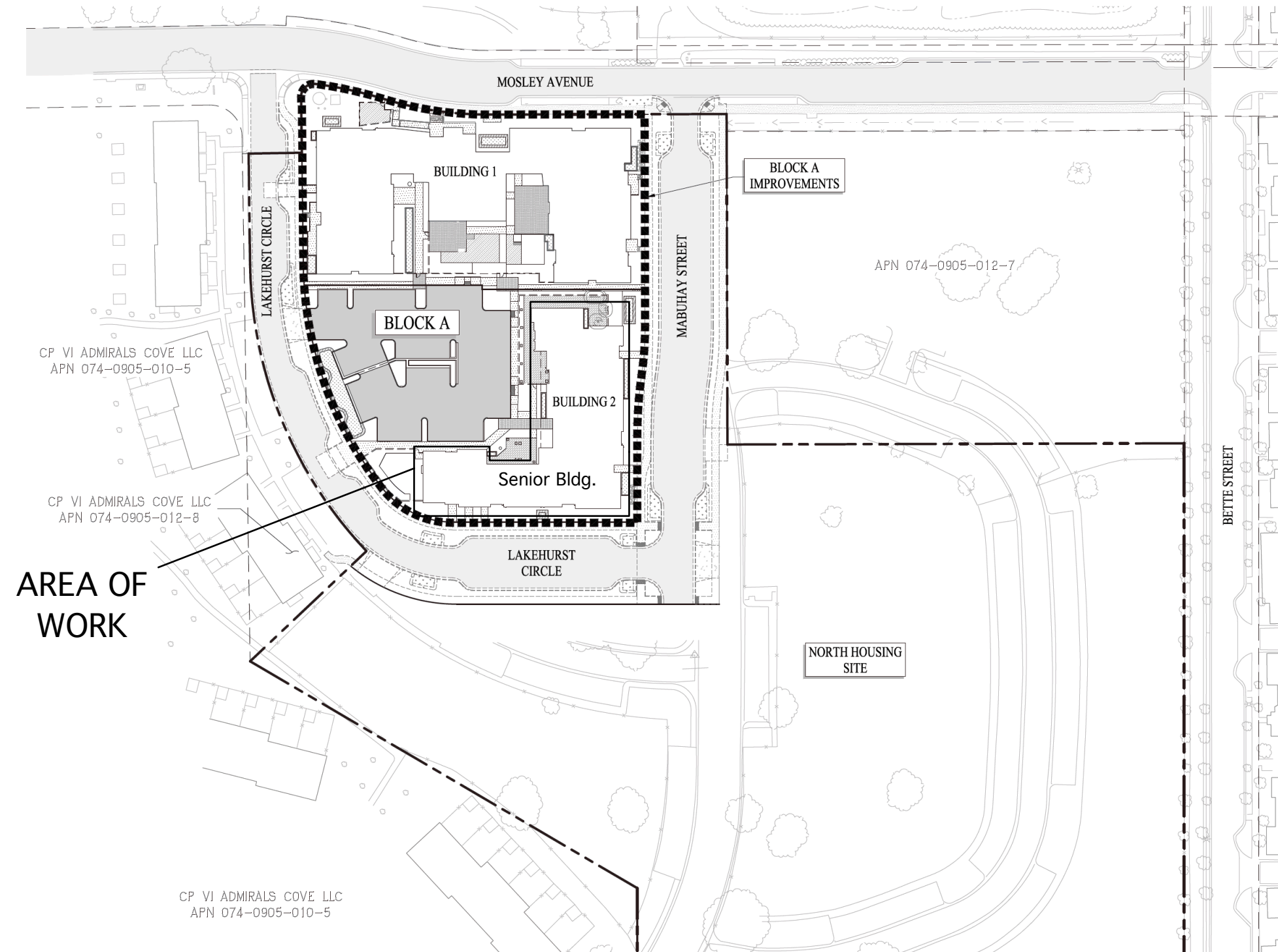


Camera#	Camera Type	Camera Location
CAM-01	PTZ WP	Water Heater Room Exterior 1st Floor
CAM-02	PTZ WP	Fire Pump Room Exterior 1st Floor
CAM-03	PTZ WP	Trash Room S1220 Exterior 1st Floor
CAM-04	Fish Eye	Trash Room S1215 1st Floor
CAM-05	PTZ	Stair 5 1st Floor
CAM-06	PTZ 2D	Corridor S1200 West 1st Floor
CAM-07	PTZ WP	Corridor S1200 Exterior 1st Floor
CAM-08	PTZ WP	Corridor S1200 West 1st Floor
CAM-09	PTZ WP	Unit SU119 Exterior South 1st Floor
CAM-10	PTZ 2D	Corridor S1200 Near Lobby 1st Floor
CAM-11	PTZ	Corridor S1200 East 1st Floor
CAM-12	PTZ WP	Corridor S1200 East Exit Exterior 1st Floor
CAM-13	PTZ WP	Unit SU113 South Exterior 1st Floor
CAM-14	PTZ WP	Unit SU113 East Exterior 1st Floor
CAM-15	PTZ	Mail Area S1135A 1st Floor
CAM-16	PTZ	Lobby S1135 1st Floor
CAM-17	PTZ 2D	Corridor S1100 near SU107 1st Floor
CAM-18	PTZ	Waiting Room S1130 1st Floor
CAM-19	PTZ WP	Unit SU107 East Exterior 1st Floor
CAM-20	Fish Eye	Laundry S1120 1st Floor
CAM-21	PTZ WP	Laundry S1120 Exterior 1st Floor
CAM-22	PTZ 2D	Corridor S1100 near Stair 4 1st Floor
CAM-23	Fish Eye	Bike Parking S1115 1st Floor
CAM-24	PTZ	Stair 4 1st Floor
CAM-25	PTZ	Community Room S1105 Kitchen 1st Floor
CAM-26	PTZ WP	Community Room S1105 South Exterior 1st Floor
CAM-27	PTZ	Community Room S1105 1st Floor
CAM-28	PTZ WP	Storage S1105A Exterior North 1st Floor
CAM-29	PTZ WP	Community Room S1105 West Exterior 1st Floor
CAM-30	PTZ	Corridor S1100 North 1st Floor
CAM-31	PTZ WP	Unit SU101 Exterior North 1st Floor
CAM-32	PTZ WP	Unit SU101 Exterior East 1st Floor
CAM-33	PTZ WP	Stair 4 Exterior East 1st Floor
CAM-34	PTZ	Elevator 3
CAM-35	PTZ	Elevator 4
CAM-36	PTZ	Stair 5 2nd Floor
CAM-37	PTZ 2D	Corridor S2200 West 2nd Floor
CAM-38	PTZ 2D	Corridor S2200 Near Lobby 2nd Floor
CAM-39	PTZ	Corridor S2200 East 2nd Floor
CAM-40	PTZ 2D	Corridor S2100 near SU207 2nd Floor
CAM-41	PTZ 2D	Corridor S2100 near Stair 4 2nd Floor
CAM-42	PTZ	Stair 4 2nd Floor
CAM-43	Fish Eye	Bike Parking S2120 2nd Floor
CAM-44	PTZ	Stair 5 3rd Floor
CAM-45	PTZ 2D	Corridor S3200 West 3rd Floor
CAM-46	PTZ 2D	Corridor S3200 Near Lobby 3rd Floor
CAM-47	PTZ	Corridor S3200 East 3rd Floor
CAM-48	PTZ 2D	Corridor S3100 near SU307 3rd Floor
CAM-49	PTZ 2D	Corridor S3100 near Stair 4 3rd Floor
CAM-50	PTZ	Stair 4 3rd Floor
CAM-51	PTZ WP	Terrace T2000 3rd Floor
CAM-52	PTZ	Corridor S3100 North 3rd Floor
CAM-53	PTZ	Stair 5 4th Floor
CAM-54	PTZ 2D	Corridor S4200 West 4th Floor
CAM-55	PTZ 2D	Corridor S4200 Near Lobby 4th Floor
CAM-56	PTZ	Corridor S4200 East 4th Floor
CAM-57	PTZ 2D	Corridor S4100 near SU407 4th Floor
CAM-58	PTZ 2D	Corridor S4100 near Stair 4 4th Floor
CAM-59	PTZ	Stair 4 4th Floor
CAM-60	PTZ	Corridor S4100 North 4th Floor
CAM-61	PTZ	Stair 5 Roof

VICINITY MAP



NORTH HOUSING - PHASE 1 (TRACT 8561)  
BLOCK A IMPROVEMENT PLANS  
CITY OF ALAMEDA CALIFORNIA



FOB#	Door #	Hardware Set	Door Location	Cable Group	Note:
<b>Floor 1:</b>					
FR-1	S1135	1	Lobby Entrance	1	I,J,R
FR-2	S1130	32	MGMT. Office waiting room	2	
FR-3	S1200	5	Corridor Entrance	3	I,J,R
FR-4	E3-1,E4-1		Elevator	6	
FR-5	S1125	26	Service Provider	2	
FR-6	S1120.1	30	Laundry	4	I,J
FR-7	S1120.2	10	Laundry Entrance	2	
FR-8	S1115	30	Bike Parking	2	I
FR-9	S1105.1	32	Community Room	4	J
FR-10	S1105.2	03 S	Community Entrance	5	I,J,R
<b>Floor 2:</b>					
FR-11	S2110	33	Bike Parking	2	I
<b>Floor 3:</b>					
	S3100.2	10	Terrace	7	R
<b>Floor 4:</b>					
	S5-R	13	Stair 2 Exterior Exit	7	R

DOOR HARDWARE KEY

I:	Card Reader
J:	Power Assist
R:	Door Prop Alarm

Door Access System SYMBOL LEGEND AND MATERIAL LIST

Symbol	Description	Model Number	Manufacturer	1st	2nd	3rd	4th	Roof	Total
DK	Door King Entry Unit	1837-090	Door King	1	0	0	0	0	1
---	Flush Mount kit for Entry	1814-200	Door King	1	0	0	0	0	1
1838	Door King Expander Unit	1838-081	Door King	1	0	0	0	0	1
FR	Wall-mount Fob Reader	RP40	HID	5	1	0	0	0	6
FR-M	Mullion-mount Fob Reader	RP10	HID	5	0	0	0	0	5
TB	Reader Module	2358-010	Door King	11	0	0	0	0	11
TBE	Enclosure for 4 Reader Modules	2351-081	Door King	3	0	0	0	0	3
DLPS	Door Lock Power Supply	AL1024ULM	Altronic	1	0	0	0	0	1
DP	Door Prop Alarm	D2-ES411K6	DSI	3	0	1	0	1	5
CC	Door Contact	1078CM	Edwards	0	1	0	0	0	1
PA	Power Assist	F.B.O.	-	5	0	0	0	0	5
REX	Request to Exit	-	-	8	1	0	0	0	9
---	Key Fob	-	Rath	150	0	0	0	0	150

CCTV System

Symbol	Description	Model Number	Manufacturer	1st	2nd	3rd	4th	Roof	Total
NVR	Video Recorder, 64 Channel	DS-9664NI-M8	Hikvision	1	0	0	0	0	1
PSW	20 port PoE Switch	DS-3E0520HP-E	Hikvision	4	0	0	0	0	4
MON	40" LCD Monitor	SQ-SMT4033	Hanwha Techwin	1	0	0	0	0	1
MON	19" LED Monitor	DS-D5019QE-B	Hikvision	1	0	0	0	0	1
FE	Fish Eye Camera Prewire	DS-2CD6365G0E-IVS	Hikvision	3	1	0	0	0	4
PTZ	PTZ Dome Camera Prewire	DS-2DE3404W-DE	Hikvision	9	3	4	4	1	21
WML	Camera Wall Mount for PTZ Cam	WML + PC140PT	Hikvision	4	4	4	4	0	16
2-DC	2-Directional Dome Camera Prewire	DS-2CD6D52GO-IHS	Hikvision	4	4	4	4	0	16
WML	Camera Wall Mount for PTZ Cam	WML + PC140PT	Hikvision	4	4	4	4	0	16
VDC	Varifocal Dome Camera Prewire	PCI-D1522S	Hikvision	17	0	0	0	0	17
WML	Camera Wall Mount for Varifocal Cam	WML + PC155	Hikvision	2	0	0	0	0	2
EL	Elevator Camera Prewire	DS-2CD6W45G0-IVS	Hikvision	2	0	0	0	0	2
EL	2 Wire Adaptor for Elevator Cam	2N-2 Wire		2	0	0	0	0	2

Intrusion Alarm

Symbol	Description	Model Number	Manufacturer	1st	2nd	3rd	4th	Roof	Total
SEC	Intrusion Alarm Panel	Vista 211PLTE	Vista	2	0	0	0	0	2
KP	Keypad	6260	Honeywell	4	0	0	0	0	4
MD	Motion Detector	6160	Honeywell	4	0	0	0	0	4
GBD	Glass Break Detector	FG-1625	Honeywell	4	0	0	0	0	4
CC	Door Contact	1078CM	Edwards	2	0	0	0	0	2

SHEET SCHEDULE:

- SEC - 1.00 Project Information
- SEC - 2.01 Floor 01
- SEC - 2.02 Floor 02
- SEC - 2.03 Floor 03
- SEC - 2.04 Floor 04
- SEC - 2.05 Roof
- SEC - 3.00 Product Data Sheets
- SEC - 3.01 Product Data Sheets
- SEC - 3.02 Product Data Sheets
- SEC - 3.03 Product Data Sheets
- SEC - 3.04 Product Data Sheets

**Alameda North Housing**  
 Block A Senior Phase  
 2000 Lakehurst Circle  
 Alameda, CA



THESE DRAWINGS AND SPECIFICATIONS HAVE BEEN PREPARED BY AECO SYSTEMS FOR THEIR EXCLUSIVE USE IN ACCORDANCE WITH SEC. 6737.4 OF THE PROFESSIONAL ENGINEERS ACT OF THE STATE OF CALIFORNIA. THEY MAY NOT BE USED FOR BIDDING PURPOSES OR FOR ANY OTHER PURPOSE WITHOUT WRITTEN AUTHORIZATION FROM AECO SYSTEMS.

Project Manager: J.M.  
 Drawn By: T.R.  
 Date: 5/30/24  
 Scale: NONE  
 Job No: 80629

REV.	DESCRIPTION	DATE
-	Permit Submittal	4/12/24
	Camera Design Update	5/30/24

Project Information

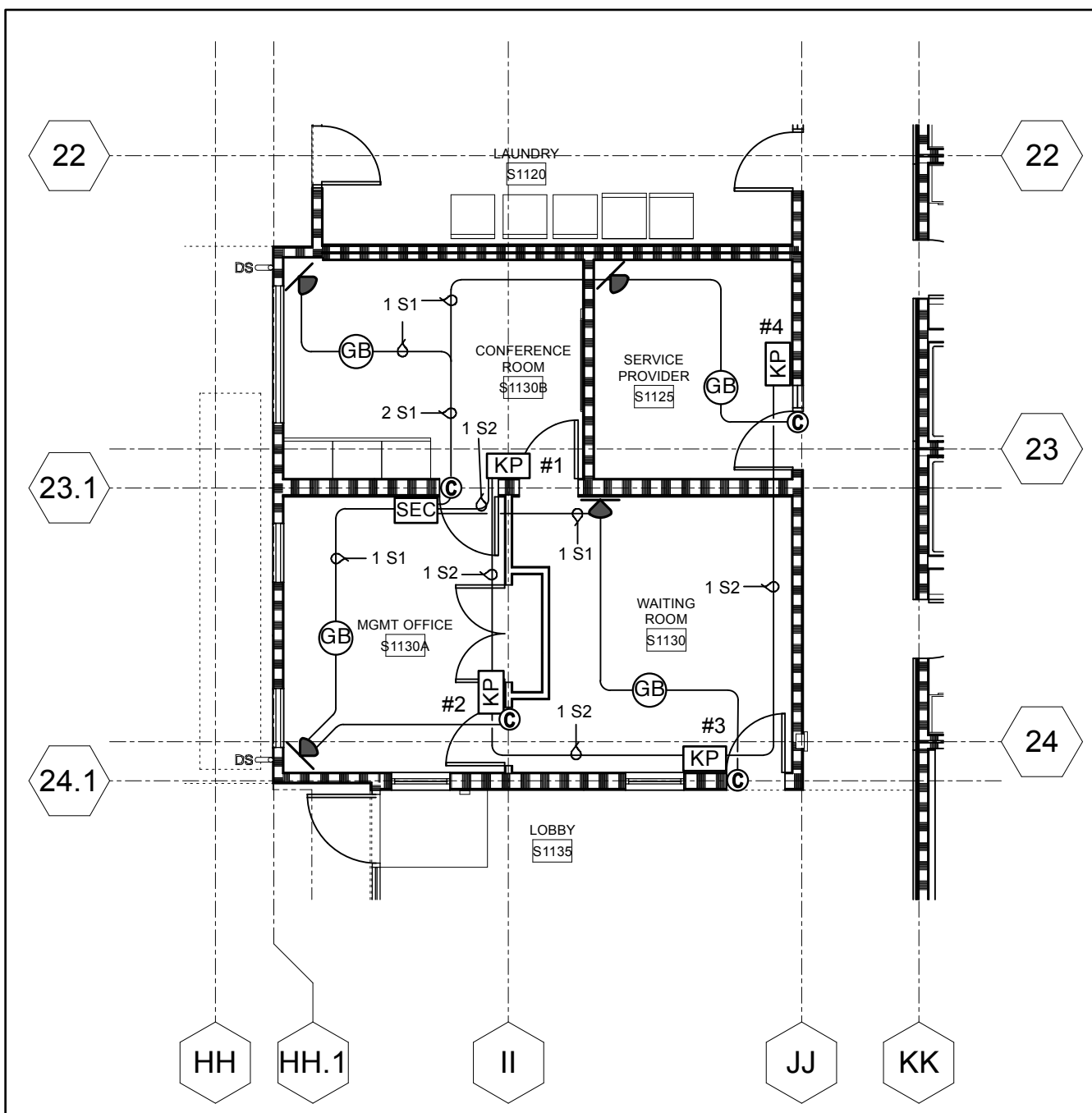
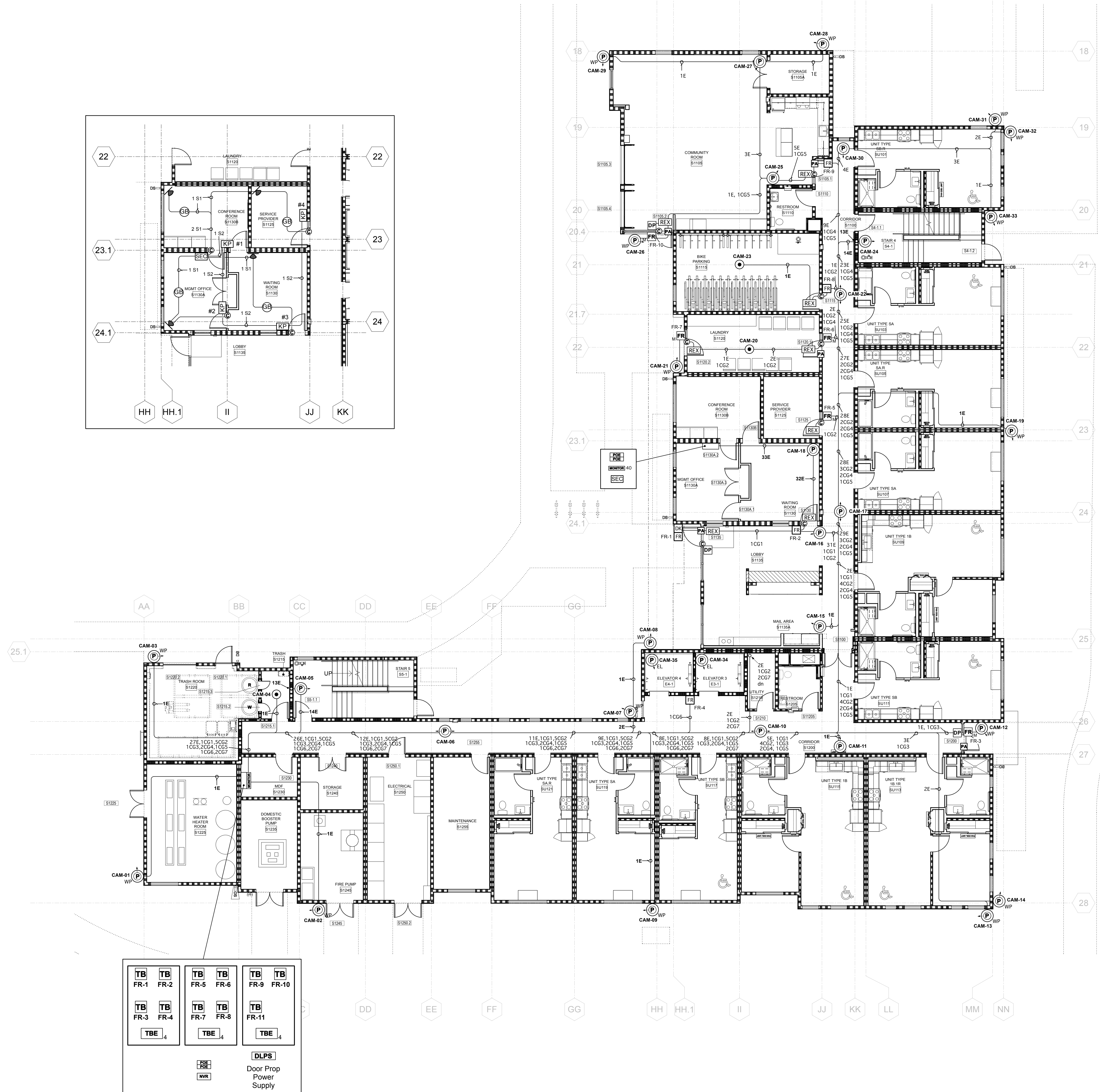
DOOR ACCESS/CCTV

Sheet Number

SEC-1.00



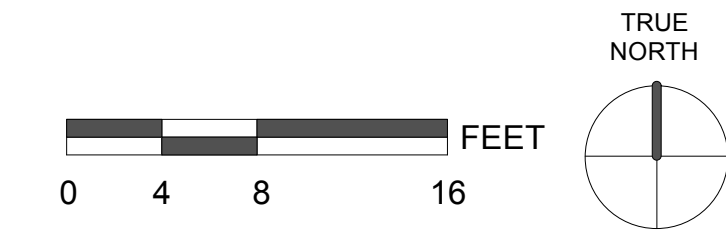
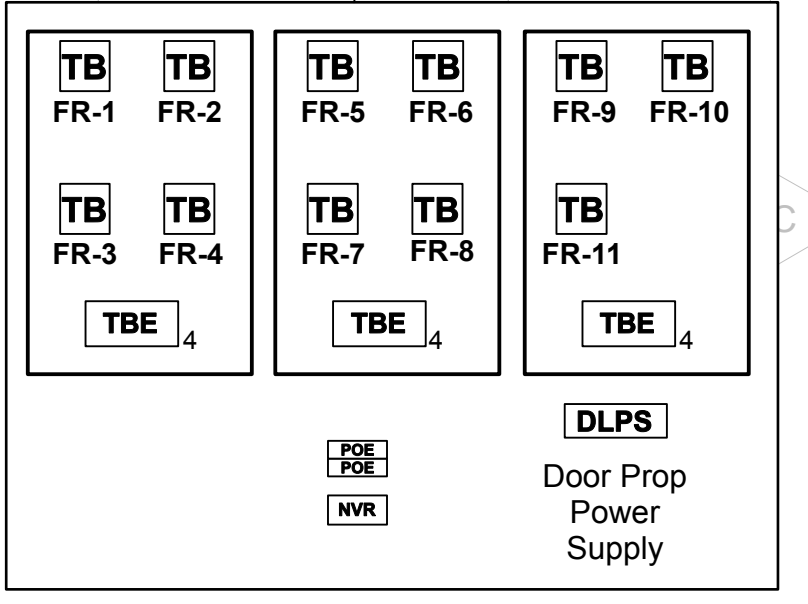
**Alameda North Housing**  
 Block A Senior Phase  
 2000 Lakehurst Circle  
 Alameda, CA



**WIRE LEGEND**

Group	Reader 22/6 Tw Sh	Door Control 16/2	Hdwe REX 22/2	Contact or AL 22/2	Operator 16/4	Local Alarm Pwr. 16/2	DK Power 16/2	Phone / Data Cat 5E	Spare
1	3	2	1	1	1	1	3	2	1
2	1	1	1	1					
3	1	1			1	1			
4	1	1	1	1	1	1			
5	1	1	1	1	1	1			
6	1	1							
7						1			

<b>E</b>	Security Camera - CAT6
<b>S1</b>	Intrusion Sensors - 22/4
<b>S2</b>	Intrusion Keypads - 22/4



**AECO SYSTEMS**  
 3512 Breakwater Ct.  
 Hayward, CA 94545  
 (510) 342-0008  
 FAX (510) 342-0013

THESE DRAWINGS AND SPECIFICATIONS HAVE BEEN PREPARED BY AECO SYSTEMS FOR THEIR EXCLUSIVE USE IN ACCORDANCE WITH SEC. 6737.4 OF THE PROFESSIONAL ENGINEERS ACT OF THE STATE OF CALIFORNIA. THEY MAY NOT BE USED FOR BIDDING PURPOSES OR FOR ANY OTHER PURPOSE WITHOUT WRITTEN AUTHORIZATION FROM AECO SYSTEMS.

Project Manager:	J.M.
Drawn By:	T.R.
Date:	5/30/24
Scale:	1/8" = 1' 0"
Job No:	80629

REVISIONS		
REV.	DESCRIPTION	DATE
-	Permit Submittal	4/12/24
-	Camera Design Update	5/30/24

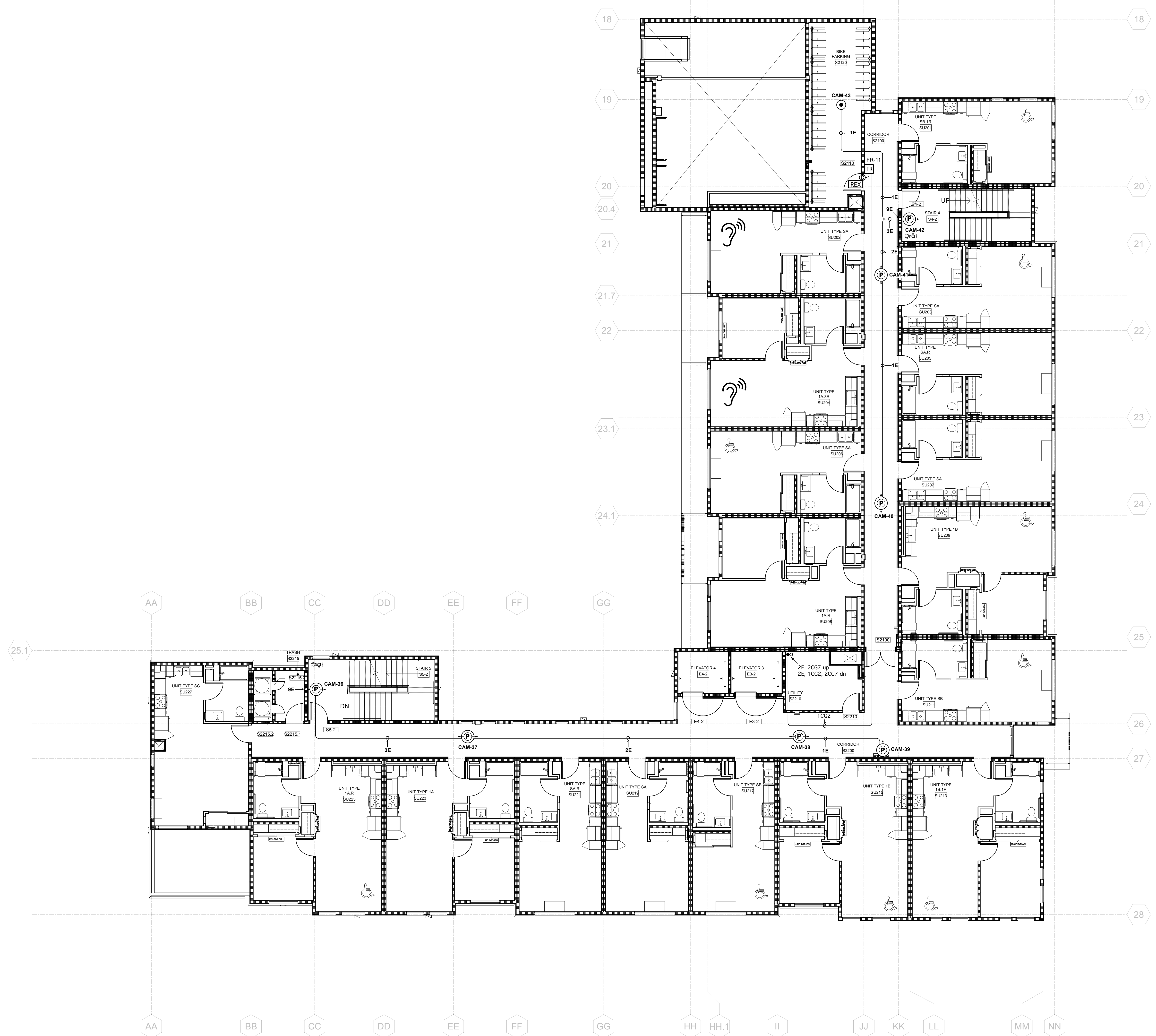
**Door Access/CCTV  
 First Floor  
 Signal Plan**

DOOR ACCESS/CCTV  
 Sheet Number

**SEC 2.01**



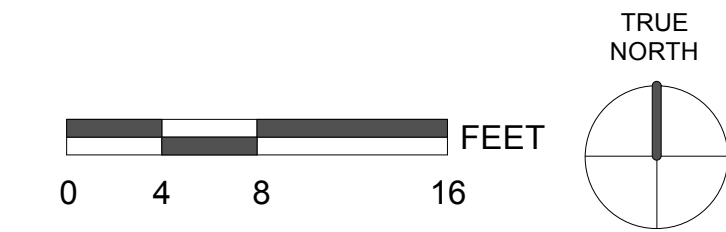
**Alameda North Housing**  
 Block A Senior Phase  
 2000 Lakehurst Circle  
 Alameda, CA



**WIRE LEGEND**

Group	Reader 22/6 Tw Sh	Door Control 16/2	Hdwe REX 22/2	Contact or AL 22/2	Operator 16/4	Local Alarm Pwr. 16/2	DK Power 16/2	Phone / Data Cat 5E	Spare
1	3	2	1	1	1	1	3	2	1
2	1	1	1	1					
3	1	1			1	1			
4	1	1	1	1	1				
5	1	1	1	1	1	1			
6	1	1							
7						1			

<b>E</b>	Security Camera - CAT6
<b>S1</b>	Intrusion Sensors - 22/4
<b>S2</b>	Intrusion Keypads - 22/4



**AECO SYSTEMS**  
 3512 Breakwater Ct.  
 Hayward, CA 94545  
 (510) 342-0008  
 FAX (510) 342-0013

THESE DRAWINGS AND SPECIFICATIONS HAVE BEEN PREPARED BY AECO SYSTEMS FOR THEIR EXCLUSIVE USE IN ACCORDANCE WITH SEC. 6737.4 OF THE PROFESSIONAL ENGINEERS ACT OF THE STATE OF CALIFORNIA. THEY MAY NOT BE USED FOR BIDDING PURPOSES OR FOR ANY OTHER PURPOSE WITHOUT WRITTEN AUTHORIZATION FROM AECO SYSTEMS.

Project Manager: J.M.  
 Drawn By: T.R.  
 Date: 5/30/24  
 Scale: 1/8" = 1' 0"  
 Job No: 80629

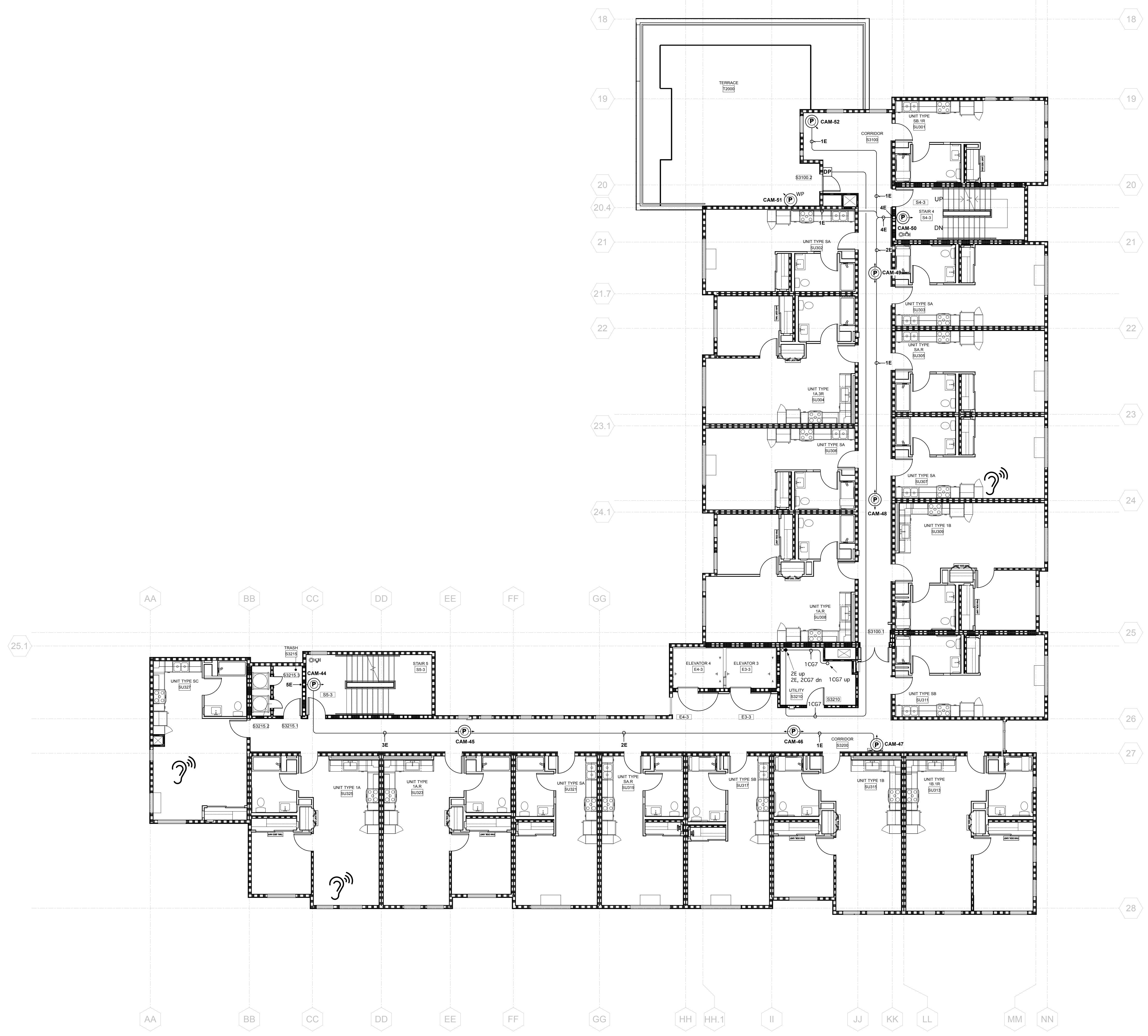
REVISIONS		
REV.	DESCRIPTION	DATE
-	Permit Submittal	4/12/24
	Camera Design Update	5/30/24

**Door Access/CCTV  
 Second Floor  
 Signal Plan**

DOOR ACCESS/CCTV  
 Sheet Number

**SEC-2.02**





**WIRE LEGEND**

Group	Reader 22/6 Tw Sh	Door Control 16/2	Hdwe REX 22/2	Contact or AL 22/2	Operator 16/4	Local Alarm Pwr. 16/2	DK Power 16/2	Phone / Data Cat 5E	Spare
1	3	2	1	1	1	1	3	2	1
2	1	1	1	1					
3	1	1			1	1			
4	1	1	1	1	1				
5	1	1	1	1	1	1			
6	1	1							
7						1			

<b>E</b>	Security Camera - CAT6
<b>S1</b>	Intrusion Sensors - 22/4
<b>S2</b>	Intrusion Keypads - 22/4



**Alameda North Housing**  
 Block A Senior Phase  
 2000 Lakehurst Circle  
 Alameda, CA



THESE DRAWINGS AND SPECIFICATIONS HAVE BEEN PREPARED BY AECO SYSTEMS FOR THEIR EXCLUSIVE USE IN ACCORDANCE WITH SEC. 6737.4 OF THE PROFESSIONAL ENGINEERS ACT OF THE STATE OF CALIFORNIA. THEY MAY NOT BE USED FOR BIDDING PURPOSES OR FOR ANY OTHER PURPOSE WITHOUT WRITTEN AUTHORIZATION FROM AECO SYSTEMS.

Project Manager: J.M.  
 Drawn By: T.R.  
 Date: 5/30/24  
 Scale: 1/8" = 1' 0"  
 Job No: 80629

REVISIONS		
REV.	DESCRIPTION	DATE
-	Permit Submittal	4/12/24
	Camera Design Update	5/30/24

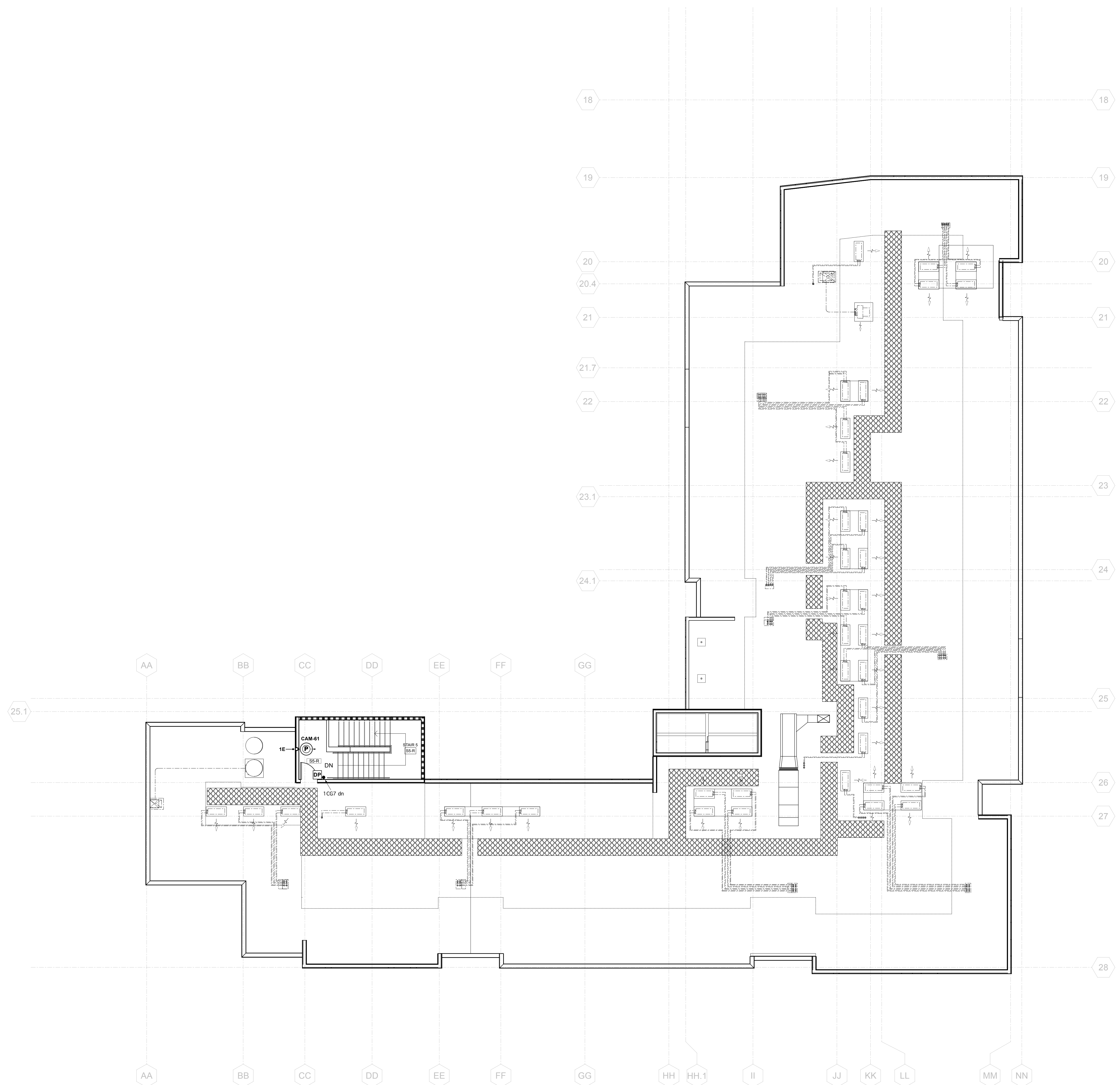
**Door Access/CCTV  
 Third Floor  
 Signal Plan**

DOOR ACCESS/CCTV  
 Sheet Number

**SEC 2.03**



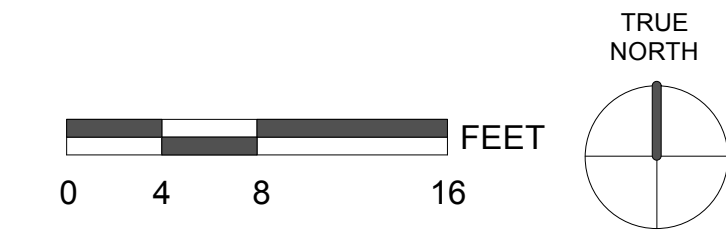




**WIRE LEGEND**

Group	Reader 22/6 Tw Sh	Door Control 16/2	Hdwe REX 22/2	Contact or AL 22/2	Operator 16/4	Local Alarm Pwr. 16/2	DK Power 16/2	Phone / Data Cat 5E	Spare
	FR		REX	Ⓞ	PA	DP			
1	3	2	1	1	1	1	3	2	1
2	1	1	1	1					
3	1	1			1	1			
4	1	1	1	1	1				
5	1	1	1	1	1	1			
6	1	1							
7						1			

<b>E</b>	Security Camera - CAT6
<b>S1</b>	Intrusion Sensors - 22/4
<b>S2</b>	Intrusion Keypads - 22/4



**Alameda North Housing**  
 Block A Senior Phase  
 2000 Lakehurst Circle  
 Alameda, CA



THESE DRAWINGS AND SPECIFICATIONS HAVE BEEN PREPARED BY AECO SYSTEMS FOR THEIR EXCLUSIVE USE IN ACCORDANCE WITH SEC. 6737.4 OF THE PROFESSIONAL ENGINEERS ACT OF THE STATE OF CALIFORNIA. THEY MAY NOT BE USED FOR BIDDING PURPOSES OR FOR ANY OTHER PURPOSE WITHOUT WRITTEN AUTHORIZATION FROM AECO SYSTEMS.

Project Manager: J.M.  
 Drawn By: T.R.  
 Date: 5/30/24  
 Scale: 1/8" = 1' 0"  
 Job No: 80629

REVISIONS		
REV.	DESCRIPTION	DATE
-	Permit Submittal	4/12/24
-	Camera Design Update	5/30/24

**Door Access/CCTV  
 Roof  
 Signal Plan**

DOOR ACCESS/CCTV  
 Sheet Number

**SEC-2.05**