

Alameda North Housing

Block A Phase 1
500 Mosley Avenue
Alameda, CA

Door Access / CCTV Submittal



AECO SYSTEMS

3512 BREAKWATER CT.
HAYWARD, CA
(510) 342-0008 FAX (510) 342-0013

Camera#	Camera Type	Camera Location
CAM-01	PTZ	Stair 2 - 1st Floor
CAM-02	PTZ	Corridor 1200 East - 1st Floor
CAM-03	PTZ WP	Corridor 1200 East Exterior - 1st Floor
CAM-04	PTZ WP	Office 1440 Exterior - 1st Floor
CAM-05	PTZ	Corridor 1400 East - 1st Floor
CAM-06	PTZ WP	Office 1450 Exterior - 1st Floor
CAM-07	PTZ	Corridor 1400 West - 1st Floor
CAM-08	PTZ	Community Room 1240 - 1st Floor
CAM-09	PTZ WP	Community Room 1240 Exterior - 1st Floor
CAM-10	PTZ	Waiting Room 1410 - 1st Floor
CAM-11	PTZ 2D	Corridor 1200 East - 1st Floor
CAM-12	PTZ WP	Stair 2 Exterior - 1st Floor
CAM-13	PTZ WP	Management Office 1230B Exterior - 1st Fl
CAM-14	PTZ	Lobby 1220 - 1st Floor
CAM-15	PTZ WP	Lobby 1220 Entrance Exterior - 1st Floor
CAM-16	PTZ	Corridor 1200 Near Security 1220A - 1st F
CAM-17	PTZ WP	Unit U111 North Exterior - 1st Floor
CAM-18	PTZ	Elevator 1
CAM-19	PTZ 2D	Corridor 1200 West - 1st Floor
CAM-20	Fish Eye	Trash 1170 - 1st Floor
CAM-21	Fish Eye	Bike Parking 1160 - 1st Floor
CAM-22	PTZ WP	Trash Room 1150 Exterior West - 1st Floor
CAM-23	PTZ WP	Unit U107 North Exterior - 1st Floor
CAM-24	PTZ WP	Unit U107 West Exterior - 1st Floor
CAM-25	Fish Eye	Laundry 1140 - 1st Floor
CAM-26	PTZ 4D WP	Laundry 1140 Exterior - 1st Floor
CAM-27	PTZ	Corridor 1200 South - 1st Floor
CAM-28	PTZ	Stair 1 - 1st Floor
CAM-29	PTZ WP	Stair 1 Exterior - 1st Floor
CAM-30	PTZ WP	Unit U101 West Exterior - 1st Floor
CAM-31	PTZ WP	Unit U101 South Exterior - 1st Floor
CAM-32	PTZ 4D WP	Unit U102 South Exterior - 1st Floor
CAM-33	PTZ	Stair 2 - 2nd Floor
CAM-34	PTZ	Corridor 2200 East - 2nd Floor
CAM-35	PTZ 2D	Corridor 2200 East - 2nd Floor
CAM-36	PTZ 2D	Corridor 2200 West - 2nd Floor
CAM-37	Fish Eye	Trash Room 2170 - 2nd Floor
CAM-38	Fish Eye	Bike Parking 2160 - 2nd Floor
CAM-39	PTZ 2D	Corridor 2200 South - 2nd Floor
CAM-40	PTZ	Stair 1 - 2nd Floor
CAM-41	PTZ	Stair 2 - 3rd Floor
CAM-42	PTZ	Corridor 3200 East - 3rd Floor
CAM-43	PTZ 2D	Corridor 3200 East - 3rd Floor
CAM-44	PTZ 2D	Corridor 3200 West - 3rd Floor
CAM-45	Fish Eye	Trash Room 3170 - 3rd Floor
CAM-46	Fish Eye	Bike Parking 3160 - 3rd Floor
CAM-47	PTZ 2D	Corridor 3200 South - 3rd Floor
CAM-48	PTZ	Stair 1 - 3rd Floor
CAM-49	PTZ	Stair 2 - 4th Floor
CAM-50	PTZ	Corridor 4200 East - 4th Floor
CAM-51	PTZ 2D	Corridor 4200 East - 4th Floor
CAM-52	PTZ 2D	Corridor 4200 West - 4th Floor
CAM-53	Fish Eye	Trash Room 4170 - 4th Floor
CAM-54	Fish Eye	Bike Parking 4160 - 4th Floor
CAM-55	PTZ 2D	Corridor 4200 South - 4th Floor
CAM-56	PTZ	Stair 2 - 5th Floor

VICINITY MAP

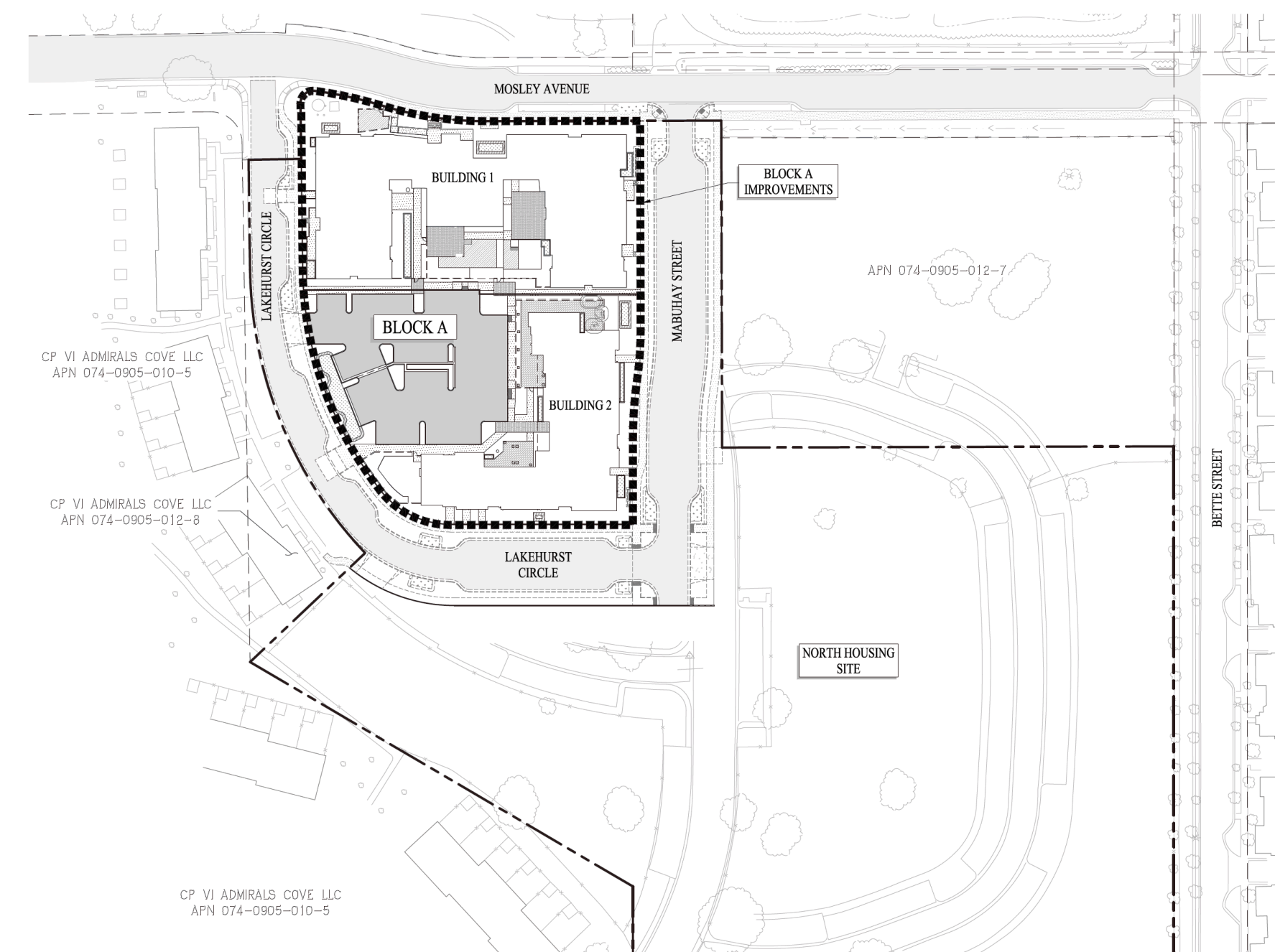


FOB#	Door #	Hardware Set	Door Location	Cable Group	Note:
Floor 1:					
FR-1	1220.1		Lobby Entrance	1	I,J,R
FR-2	1230A	31	MGMT Office	2	I
FR-3	1200.3	1	Corridor Entrance	5	I,J,R
FR-4	1220.3		Security	2	I
FR-5	1220.2		Security	2	I
FR-6	1210	31	Large Conference Rm	2	I
FR-7	E1-1		Elevator	6	I
FR-8	1160	30	Bike Parking	2	I
FR-9	1140.1	29	Laundry	4	I,J
FR-10	1140.2	9	Laundry Entrance	3	I,R
FR-11	1240.1	31	Community Room	2	I
FR-12	1410.1	31	Waiting Rm.	2	I
FR-13	1420.1	26	Breakroom	2	I
FR-14	1440.1	26	Office 1	2	I
FR-15	1400	8	Community Entrance	5	I,J,R
FR-16	1240.2	38	Community Room	4	I,J
FR-17	1240.4	2	Community Rm. Entrance	3	I,R
	1230B.2	12	MGMT Office Exterior Exit	7	R
	S1-1.2	5	Stair 1 Exterior Exit	7	R
	S2-1.2	6	Stair 2 Exterior Exit	7	R
Floor 2:					
FR-18	2160	33	Bike Parking	2	I
Floor 3:					
FR-19	3160	32	Bike Parking	2	I
Floor 4:					
FR-20	4160	32	Bike Parking	2	I
Roof:					
	S2-R	13	Stair 2 Exterior Exit	7	R

DOOR HARDWARE KEY

I:	Card Reader
J:	Power Assist
R:	Door Prop Alarm

NORTH HOUSING - PHASE 1 (TRACT 8561)
BLOCK A IMPROVEMENT PLANS
CITY OF ALAMEDA CALIFORNIA



Door Access System SYMBOL LEGEND AND MATERIAL LIST

Symbol	Description	Model Number	Manufacturer	1st	2nd	3rd	4th	Roof	Total
DK	Doorlocking Entry Unit	1837-090	Door King	1	0	0	0	0	1
FM	Flush Mount kit for Entry	1814-200	Door King	1	0	0	0	0	1
1838	Doorlocking Expander Unit	1838-081	Door King	1	0	0	0	0	1
FR	Wall-mount Fob Reader	RP40	HID	6	1	1	1	0	9
FRM	Mullion-mount Fob Reader	RP10	HID	11	0	0	0	0	11
TB	Reader Module	2358-010	Door King	20	0	0	0	0	20
TBE	Enclosure for 4 Reader Modules	2351-081	Door King	5	0	0	0	0	5
DLPS	Door Lock Power Supply	AL1024JLM	Altronix	2	0	0	0	0	2
DP	Door Prop Alarm	D2-E5411K6	DSI	8	0	0	0	1	9
DC	Door Contact	1078CM	Edwards	17	1	1	1	0	20
PA	Power Assist	F.B.O.	-	5	0	0	0	0	5
REX	Request to Exit	-	-	16	1	1	1	0	19
--	Key Fob	-	Rath	150	0	0	0	0	150

CCTV System

Symbol	Description	Model Number	Manufacturer	1st	2nd	3rd	4th	Roof	Total
NVR	Video Recorder, 64 Channel	DS-9664NI-M8	Hikvision	1	0	0	0	0	1
PSW	20 port PoE Switch	DS-3E0520HP-E	Hikvision	3	0	0	0	0	3
40"	40" LCD Monitor	SQ-SMT4033	Hanwha Techwin	1	0	0	0	0	1
19"	19" LED Monitor	DS-D5019QE-B	Hikvision	1	0	0	0	0	1
FEC	Fish Eye Camera Prewire	DS-2CD6365G0E-IVS	Hikvision	3	2	2	2	0	9
PTZ	PTZ Dome Camera Prewire	DS-2DE3404W-DE	Hikvision	9	3	3	3	1	19
2-D	2-Directional Dome Camera Prewire	DS-2CD6D52G0-IHS	Hikvision	3	3	3	3	0	12
4-D	4-Directional Dome Camera Prewire	DS-2CD6D24FWD-I2HS	Hikvision	2	0	0	0	0	2
VFC	Varifocal Dome Camera Prewire	PCI-D1522S	Hikvision	14	0	0	0	0	14
Elev	Elevator Camera Prewire	WML + PCI155	Hikvision	1	0	0	0	0	1
2-W	2-Wire Adaptor for Elevator Cam	DS-2CD6W45G0-IVS	Hikvision	1	0	0	0	0	1

Intrusion Alarm

Symbol	Description	Model Number	Manufacturer	1st	2nd	3rd	4th	Roof	Total
SEC	Intrusion Alarm Panel	Vista 21PLTE	Vista	1	0	0	0	0	1
KEP	Keypad	6160	Honeywell	3	0	0	0	0	3
MD	Motion Detector	DT8035V	Honeywell	3	0	0	0	0	3
GBD	Glass Break Detector	FG-1625	Honeywell	3	0	0	0	0	3
DC	Door Contact	947-75TBR	Edwards	3	0	0	0	0	3

SHEET SCHEDULE:

- SEC - 1.00 Project Information
- SEC - 2.01 Floor 01
- SEC - 2.02 Floor 02
- SEC - 2.03 Floor 03
- SEC - 2.04 Floor 04
- SEC - 2.05 Roof
- SEC - 3.00 Product Data Sheets
- SEC - 3.01 Product Data Sheets
- SEC - 3.02 Product Data Sheets
- SEC - 3.03 Product Data Sheets
- SEC - 3.04 Product Data Sheets

Alameda North Housing
 Block A Phase 1
 500 Mosley Avenue
 Alameda, CA



AECO SYSTEMS
 3512 Breakwater Ct.
 Hayward, CA 94545
 (510) 342-0008
 FAX (510) 342-0013

THESE DRAWINGS AND SPECIFICATIONS HAVE BEEN PREPARED BY AECO SYSTEMS FOR THEIR EXCLUSIVE USE IN ACCORDANCE WITH SEC. 6737.4 OF THE PROFESSIONAL ENGINEERS ACT OF THE STATE OF CALIFORNIA. THEY MAY NOT BE USED FOR BIDDING PURPOSES OR FOR ANY OTHER PURPOSE WITHOUT WRITTEN AUTHORIZATION FROM AECO SYSTEMS.

Project Manager: J.M.
 Drawn By: T.R.
 Date: 5/29/24
 Scale: NONE
 Job No: 80627

REV.	DESCRIPTION	DATE
-	Permit Submittal	3/6/24
	Camera Design Update	5/29/24

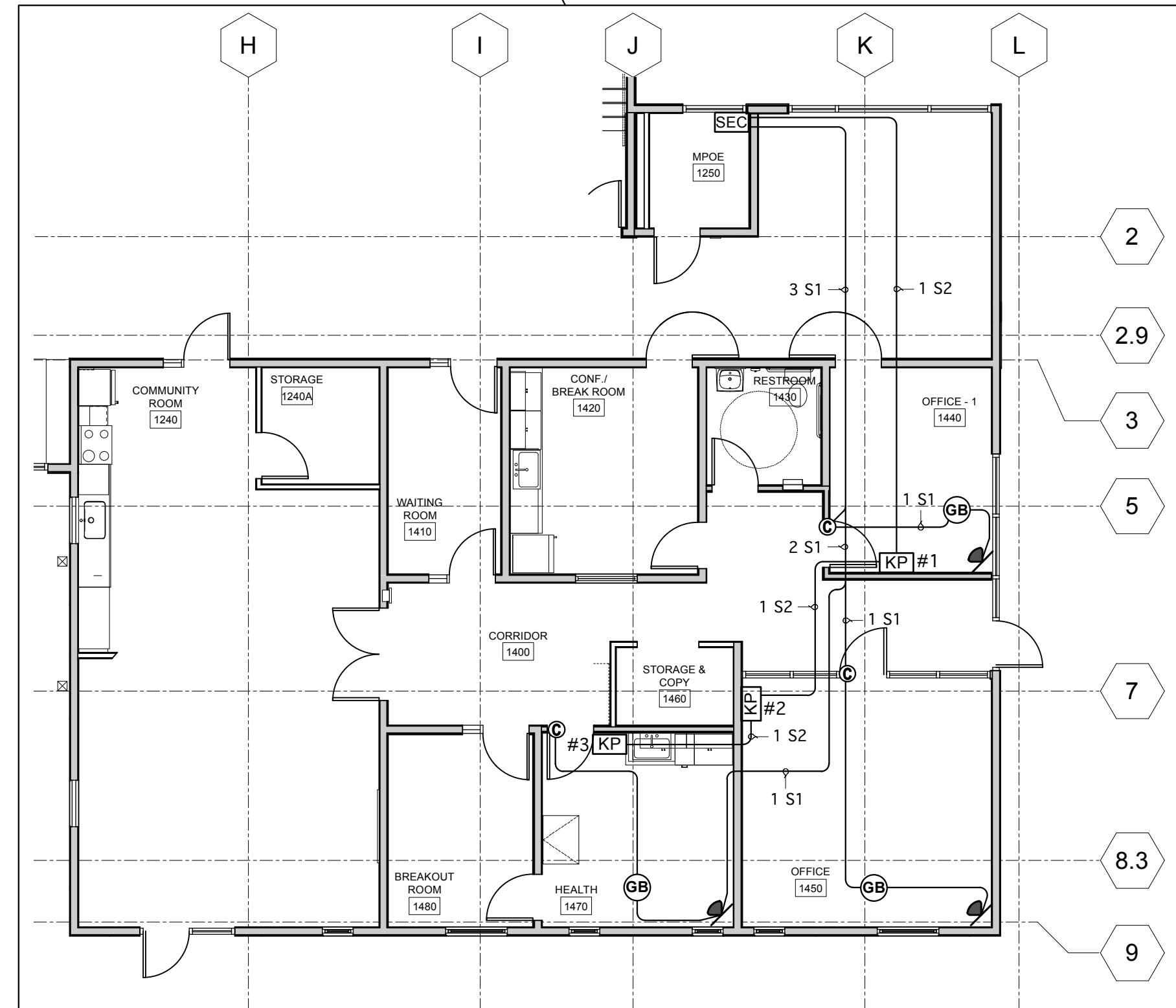
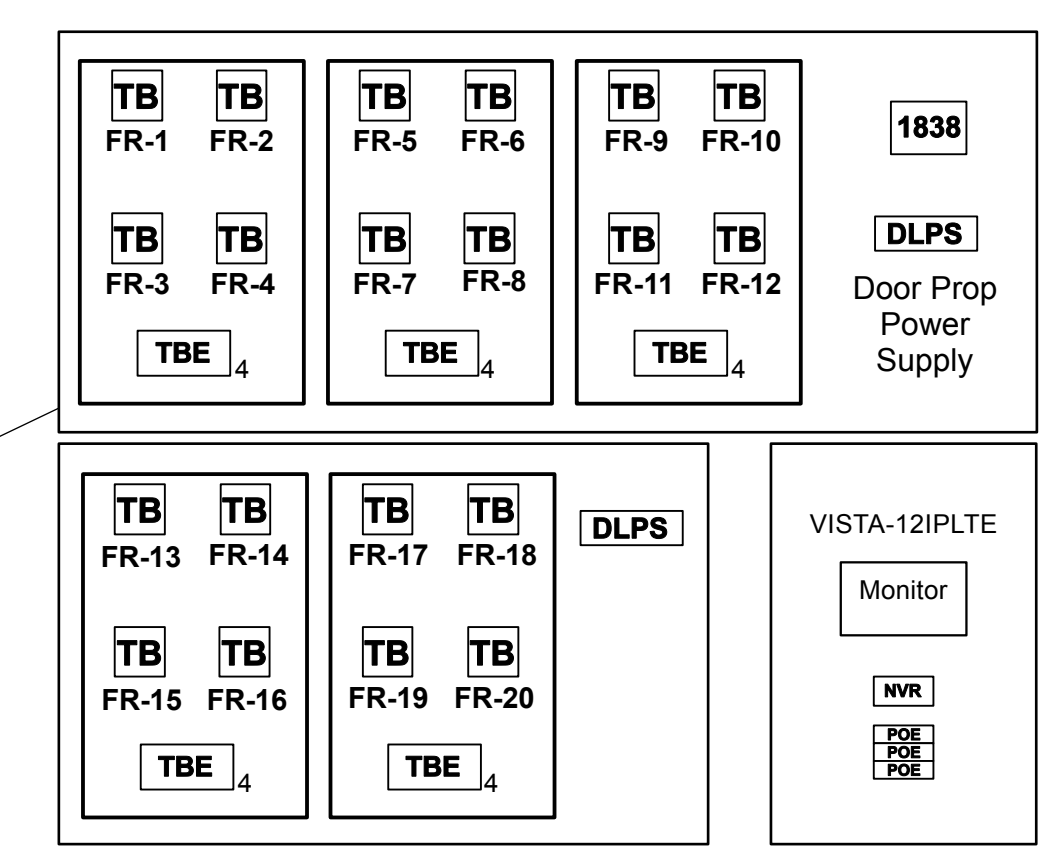
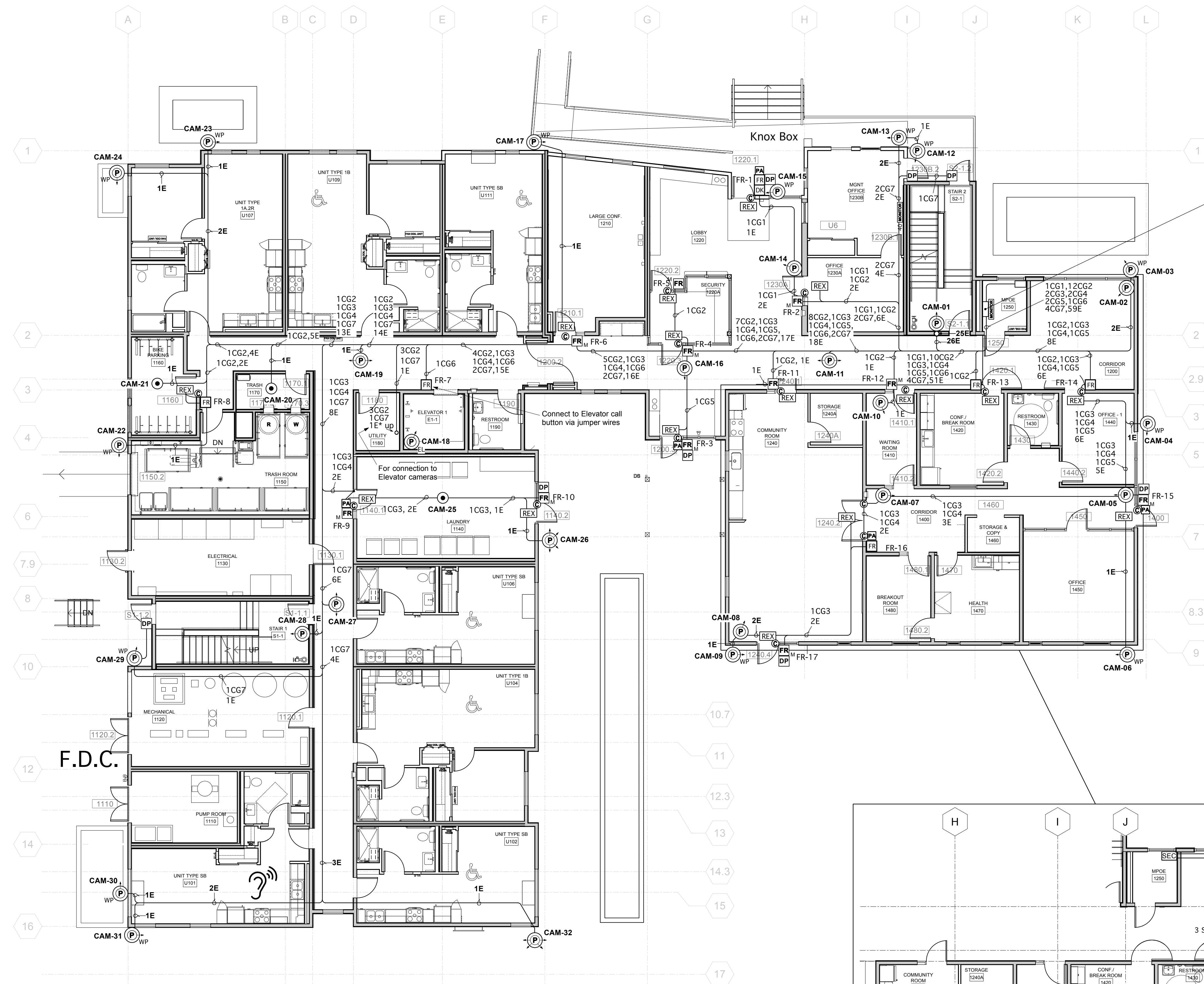
Project Information
 DOOR ACCESS/CCTV
 Sheet Number

SEC-1.00

Alameda North Housing

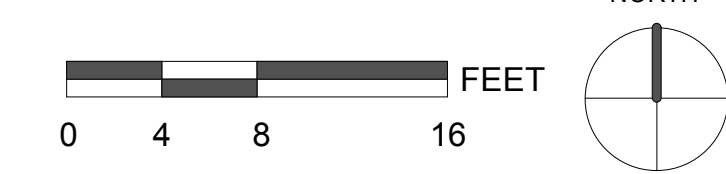
Block A Phase 1

500 Mosley Avenue
Alameda, CA



GROUP	READER 22/6 Tw. Sh.	DOOR CONTROL 16/2	HARDWARE REX 22/2	CONTACT or AL 22/2	OPERATOR 16/4	LOCAL ALARM POWER 16/2	DK POWER 16/2	PHONE/DATA CAT 5e	IP PHONE 16/2	SPARE 16/2
1	3	2	1	1	1	1	3	2	1	1
2	1	1	1	1						
3	1	1	1	1	1					
4	1	1	1	1	1					
5	1	1	1	1	1	1				
6	1	1								
7						1				

E	Security Camera - CAT6
S1	Intrusion Sensors - 22/4
S2	Intrusion Keypads - 22/4



AECO SYSTEMS
 3512 Breakwater Ct.
 Hayward, CA 94545
 (510) 342-0008
 FAX (510) 342-0013

THESE DRAWINGS AND SPECIFICATIONS HAVE BEEN PREPARED BY AECO SYSTEMS FOR THEIR EXCLUSIVE USE IN ACCORDANCE WITH SEC. 6737.4 OF THE PROFESSIONAL ENGINEERS ACT OF THE STATE OF CALIFORNIA. THEY MAY NOT BE USED FOR BIDDING PURPOSES OR FOR ANY OTHER PURPOSE WITHOUT WRITTEN AUTHORIZATION FROM AECO SYSTEMS.

Project Manager:	J.M.
Drawn By:	T.R.
Date:	5/29/24
Scale:	1/8" = 1' 0"
Job No:	80627

REVISIONS		
REV.	DESCRIPTION	DATE
-	Permit Submittal	3/6/24
-	Camera Design Update	5/29/24

Door Access/CCTV First Floor Signal Plan

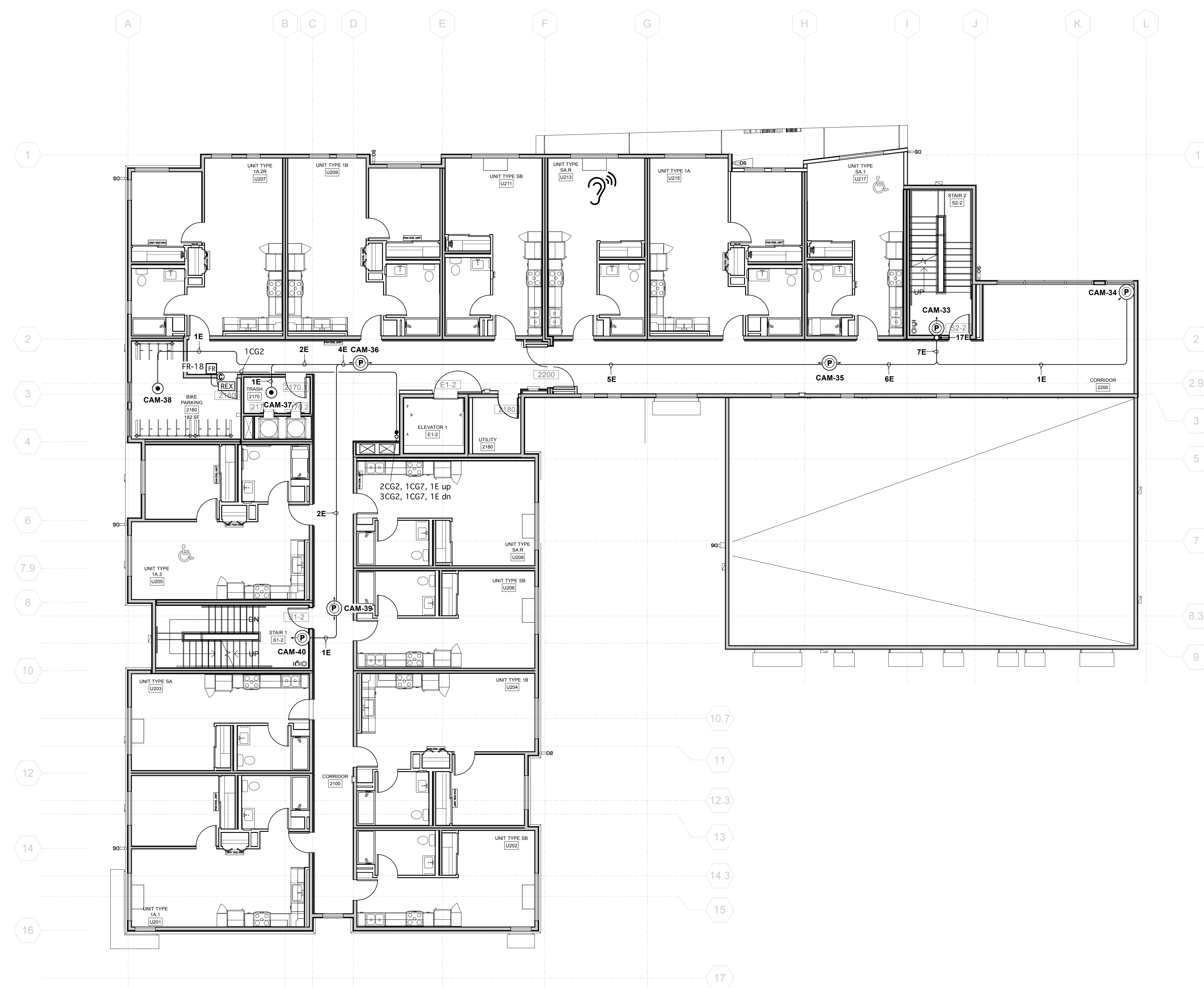
DOOR ACCESS/CCTV
Sheet Number

SEC 2.01

Alameda North Housing

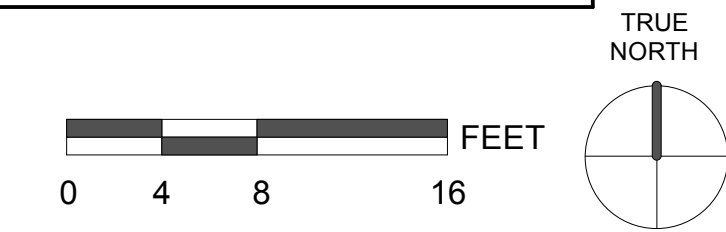
Block A Phase 1

500 Mosley Avenue
Alameda, CA



GROUP	READER 22/6 Tw. Sh.	DOOR CONTROL 16/2	HARDWARE REX 22/2	CONTACT or AL 22/2	OPERATOR 16/4	LOCAL ALARM POWER 16/2	DK POWER 16/2	PHONE/DATA CAT 5e	IP PHONE 16/2	SPARE 16/2
1	3	2	1	1	1	1	3	2	1	1
2	1	1	1	1						
3	1	1	1	1	1					
4	1	1	1	1	1					
5	1	1	1	1	1	1				
6	1	1								
7						1				

E	Security Camera - CAT6
S1	Intrusion Sensors - 22/4
S2	Intrusion Keypads - 22/4



AECO SYSTEMS
3512 Breakwater Ct.
Hayward, CA 94545
(510) 342-0008
FAX (510) 342-0013

LICENSED CONTRACTOR
AECO SYSTEMS
C-10
#701510
01-31-25
STATE OF CALIFORNIA

THESE DRAWINGS AND SPECIFICATIONS HAVE BEEN PREPARED BY AECO SYSTEMS FOR THEIR EXCLUSIVE USE IN ACCORDANCE WITH SEC. 6737.4 OF THE PROFESSIONAL ENGINEERS ACT OF THE STATE OF CALIFORNIA. THEY MAY NOT BE USED FOR BIDDING PURPOSES OR FOR ANY OTHER PURPOSE WITHOUT WRITTEN AUTHORIZATION FROM AECO SYSTEMS.

Project Manager: J.M.
Drawn By: T.R.
Date: 5/29/24
Scale: 1/8" = 1' 0"
Job No: 80627

REVISIONS		
REV.	DESCRIPTION	DATE
-	Permit Submittal	3/6/24
	Camera Design Update	5/29/24

Door Access/CCTV Second Floor Signal Plan

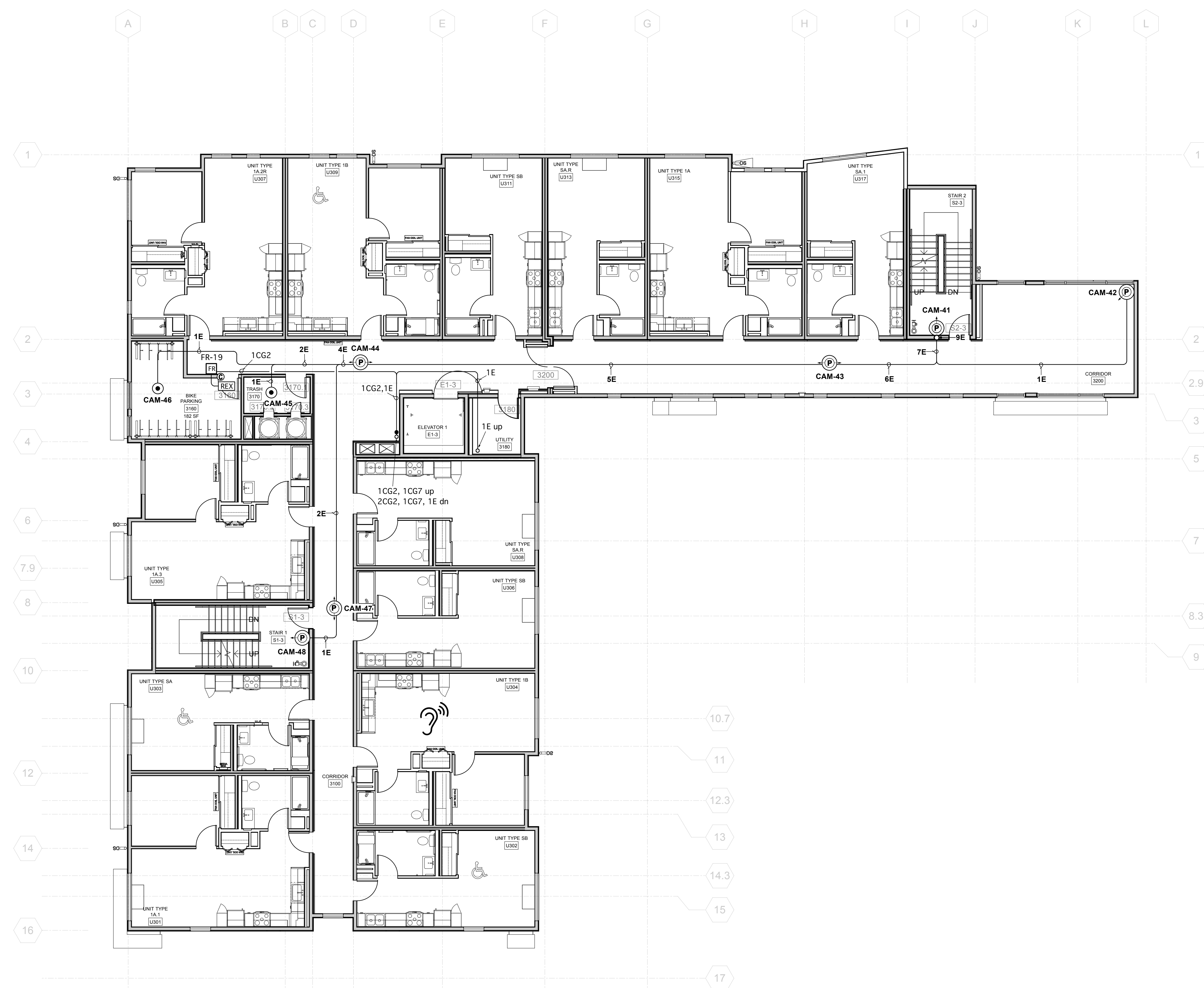
DOOR ACCESS/CCTV
Sheet Number

SEC-2.02

Alameda North Housing

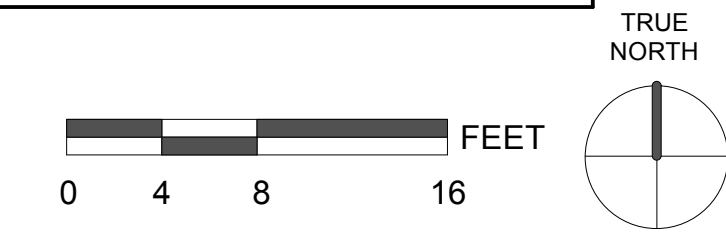
Block A Phase 1

500 Mosley Avenue
Alameda, CA



GROUP	READER 22/6 Tw. Sh.	DOOR CONTROL 16/2	HARDWARE REX 22/2	CONTACT or AL 22/2	OPERATOR 16/4	LOCAL ALARM POWER 16/2	DK POWER 16/2	PHONE/DATA CAT 5e	IP PHONE 16/2	SPARE 16/2
1	3	2	1	1	1	1	3	2	1	1
2	1	1	1	1						
3	1	1	1	1	1					
4	1	1	1	1	1					
5	1	1	1	1	1	1				
6	1	1								
7						1				

E	Security Camera - CAT6
S1	Intrusion Sensors - 22/4
S2	Intrusion Keypads - 22/4




AECO SYSTEMS
 3512 Breakwater Ct.
 Hayward, CA 94545
 (510) 342-0008
 FAX (510) 342-0013

LICENSED CONTRACTOR
 AECO SYSTEMS
 C-10
 #701510
 01-31-25
 STATE OF CALIFORNIA

THESE DRAWINGS AND SPECIFICATIONS HAVE BEEN PREPARED BY AECO SYSTEMS FOR THEIR EXCLUSIVE USE IN ACCORDANCE WITH SEC. 6737.4 OF THE PROFESSIONAL ENGINEERS ACT OF THE STATE OF CALIFORNIA. THEY MAY NOT BE USED FOR BIDDING PURPOSES OR FOR ANY OTHER PURPOSE WITHOUT WRITTEN AUTHORIZATION FROM AECO SYSTEMS.

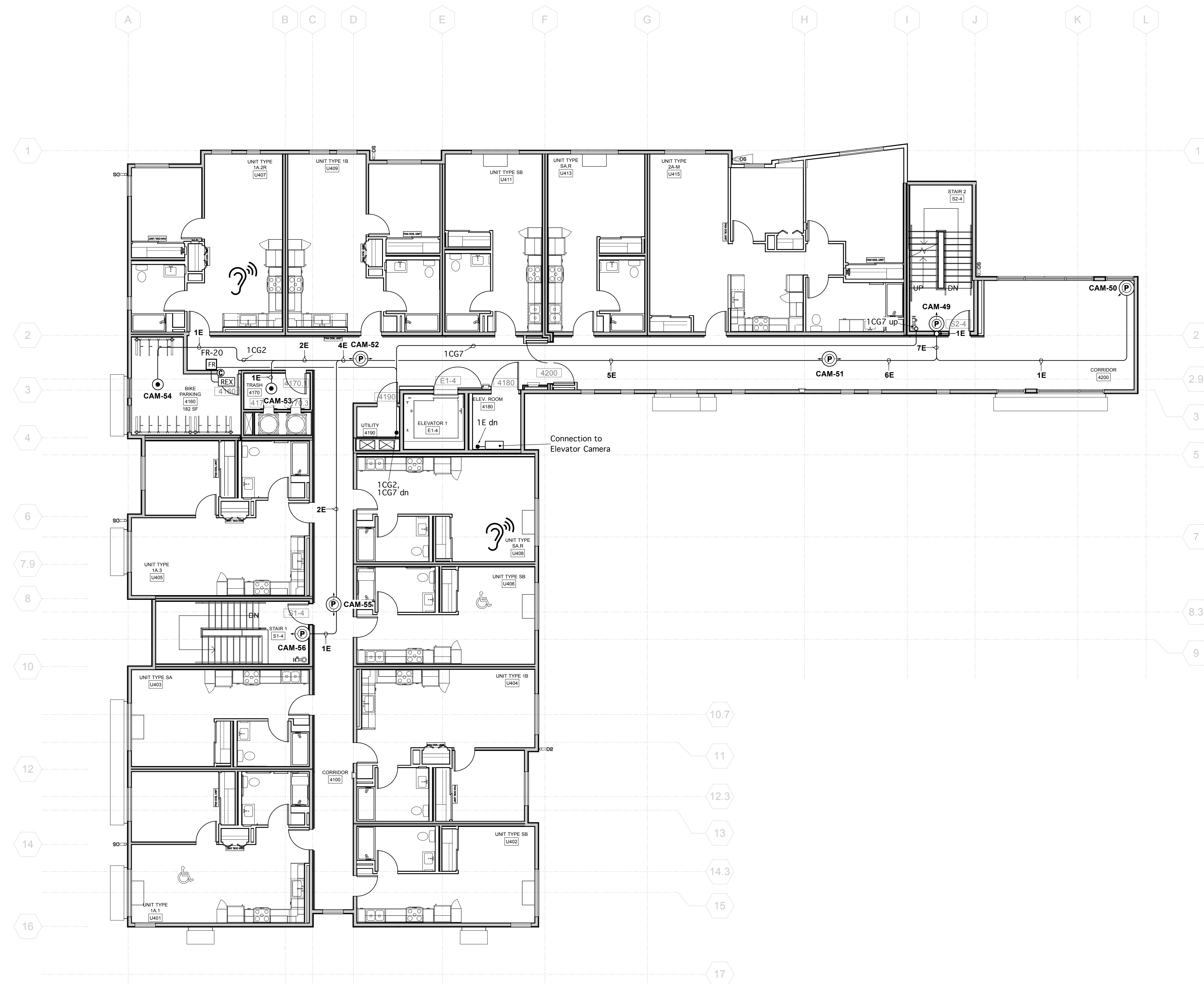
Project Manager: J.M.
 Drawn By: T.R.
 Date: 5/29/24
 Scale: 1/8" = 1' 0"
 Job No: 80627

REVISIONS		
REV.	DESCRIPTION	DATE
-	Permit Submittal	3/6/24
-	Camera Design Update	5/29/24

Door Access/CCTV Third Floor Signal Plan

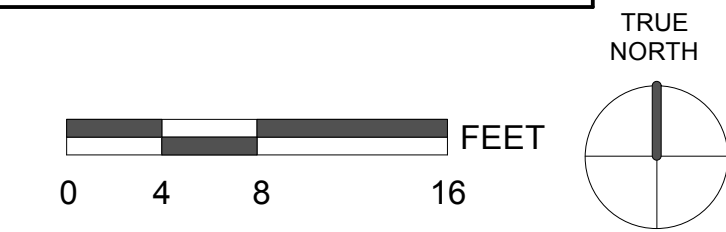
DOOR ACCESS/CCTV
Sheet Number

SEC 2.03



GROUP	READER 22/6 Tw. Sh.	DOOR CONTROL 16/2	HARDWARE REX 22/2	CONTACT or AL 22/2	OPERATOR 16/4	LOCAL ALARM POWER 16/2	DK POWER 16/2	PHONE/DATA CAT 5e	IP PHONE 16/2	SPARE 16/2
1	3	2	1	1	1	1	3	2	1	1
2	1	1	1	1						
3	1	1	1	1	1					
4	1	1	1	1	1					
5	1	1	1	1	1	1				
6	1	1								
7						1				

E	Security Camera - CAT6
S1	Intrusion Sensors - 22/4
S2	Intrusion Keypads - 22/4



Alameda North Housing
Block A Phase 1
500 Mosley Avenue
Alameda, CA



THESE DRAWINGS AND SPECIFICATIONS HAVE BEEN PREPARED BY AECO SYSTEMS FOR THEIR EXCLUSIVE USE IN ACCORDANCE WITH SEC. 6737.4 OF THE PROFESSIONAL ENGINEERS ACT OF THE STATE OF CALIFORNIA. THEY MAY NOT BE USED FOR BIDDING PURPOSES OR FOR ANY OTHER PURPOSE WITHOUT WRITTEN AUTHORIZATION FROM AECO SYSTEMS.

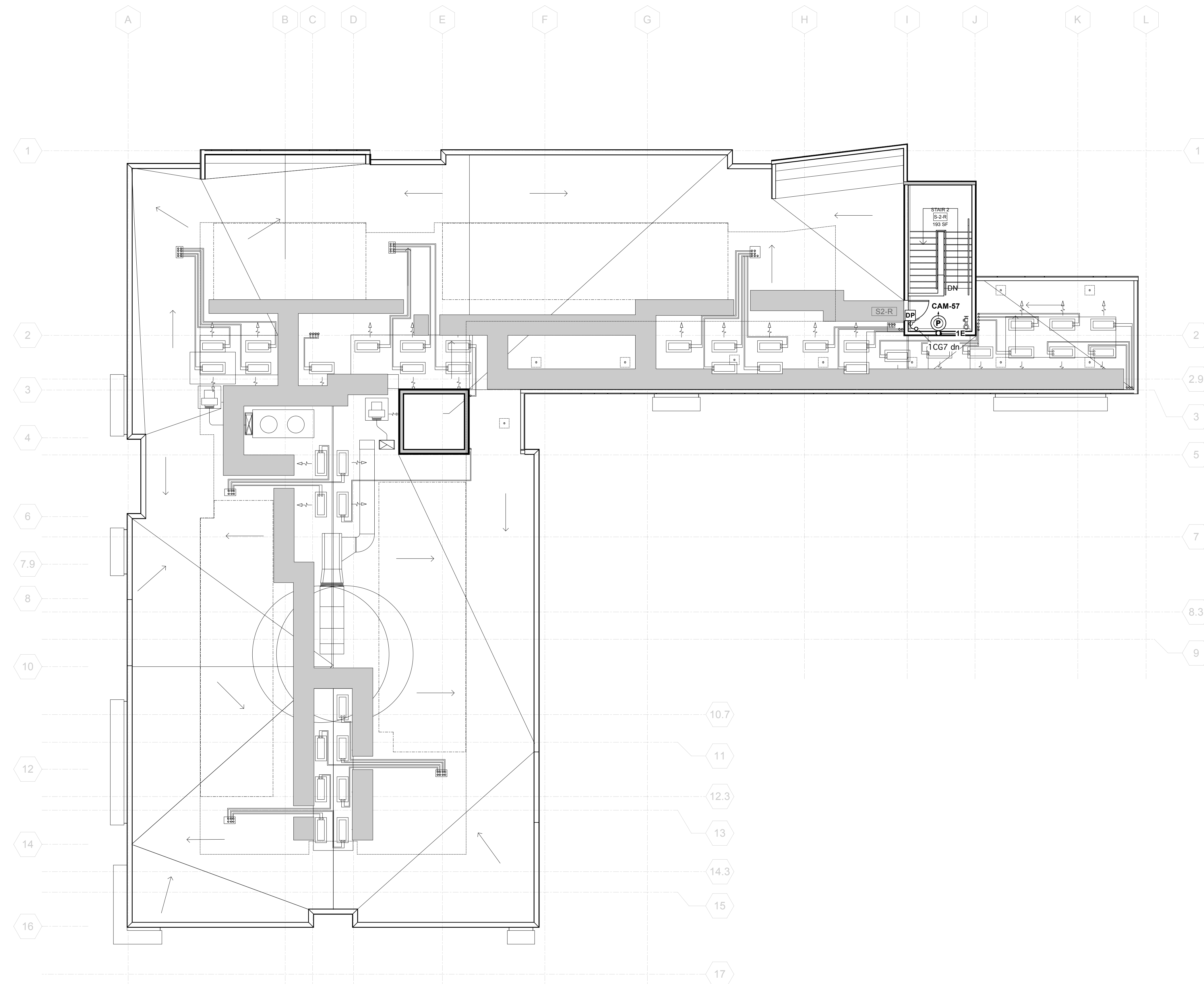
Project Manager: J.M.
Drawn By: T.R.
Date: 5/29/24
Scale: 1/8" = 1' 0"
Job No: 80627

REVISIONS		
REV.	DESCRIPTION	DATE
-	Permit Submittal	3/6/24
-	Camera Design Update	5/29/24

Door Access/CCTV
Fourth Floor
Signal Plan

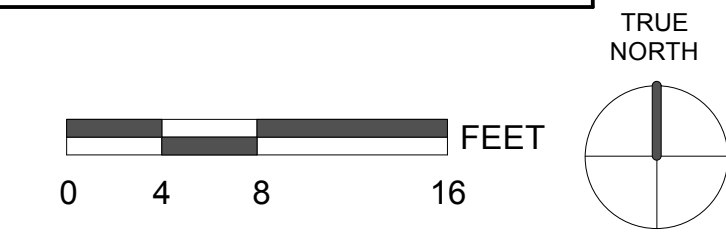
DOOR ACCESS/CCTV
Sheet Number

SEC-2.04



GROUP	READER 22/6 Tw. Sh.	DOOR CONTROL 16/2	HARDWARE REX 22/2	CONTACT or AL 22/2	OPERATOR 16/4	LOCAL ALARM POWER 16/2	DK POWER 16/2	PHONE/DATA CAT 5e	IP PHONE 16/2	SPARE 16/2
1	3	2	1	1	1	1	3	2	1	1
2	1	1	1	1						
3	1	1	1	1	1					
4	1	1	1	1	1					
5	1	1	1	1	1	1				
6	1	1								
7						1				

E	Security Camera - CAT6
S1	Intrusion Sensors - 22/4
S2	Intrusion Keypads - 22/4



Alameda North Housing
Block A Phase 1
500 Mosley Avenue
Alameda, CA

AECO SYSTEMS
3512 Breakwater Ct.
Hayward, CA 94545
(510) 342-0008
FAX (510) 342-0013

THESE DRAWINGS AND SPECIFICATIONS HAVE BEEN PREPARED BY AECO SYSTEMS FOR THEIR EXCLUSIVE USE IN ACCORDANCE WITH SEC. 6737.4 OF THE PROFESSIONAL ENGINEERS ACT OF THE STATE OF CALIFORNIA. THEY MAY NOT BE USED FOR BIDDING PURPOSES OR FOR ANY OTHER PURPOSE WITHOUT WRITTEN AUTHORIZATION FROM AECO SYSTEMS.

Project Manager: J.M.
Drawn By: T.R.
Date: 5/29/24
Scale: 1/8" = 1' 0"
Job No: 80627

REVISIONS		
REV.	DESCRIPTION	DATE
-	Permit Submittal	3/6/24
-	Camera Design Update	5/29/24

Door Access/CCTV
Roof
Signal Plan

DOOR ACCESS/CCTV
Sheet Number

SEC-2.05